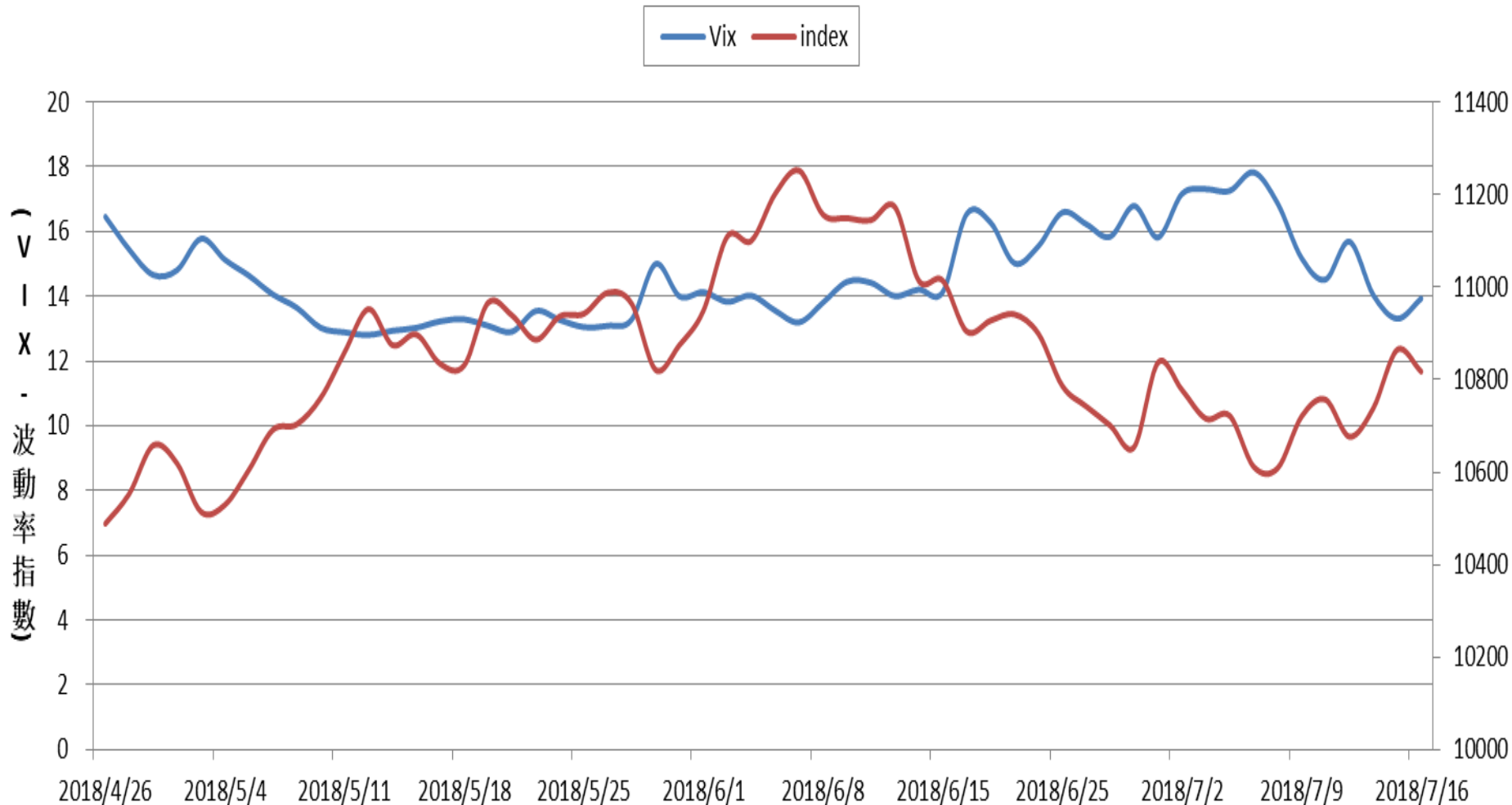
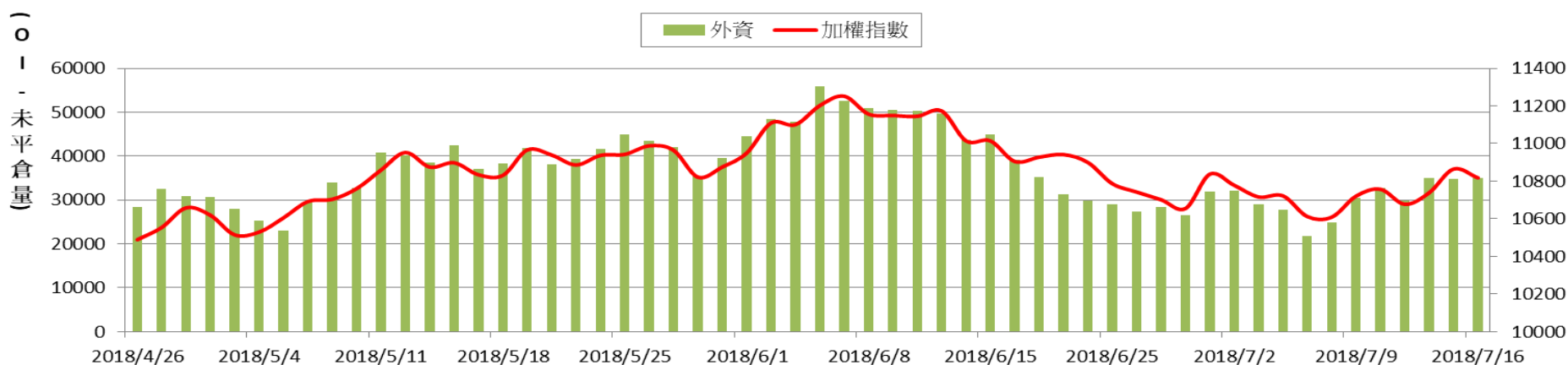


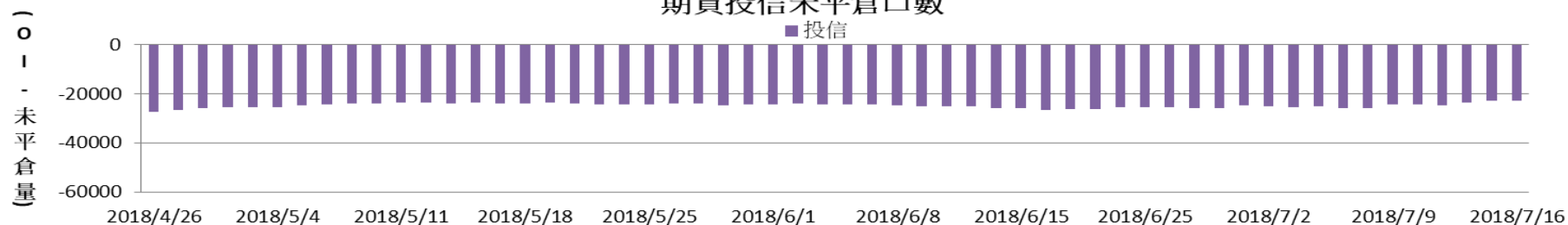
Vix指數 V.S 加權指數



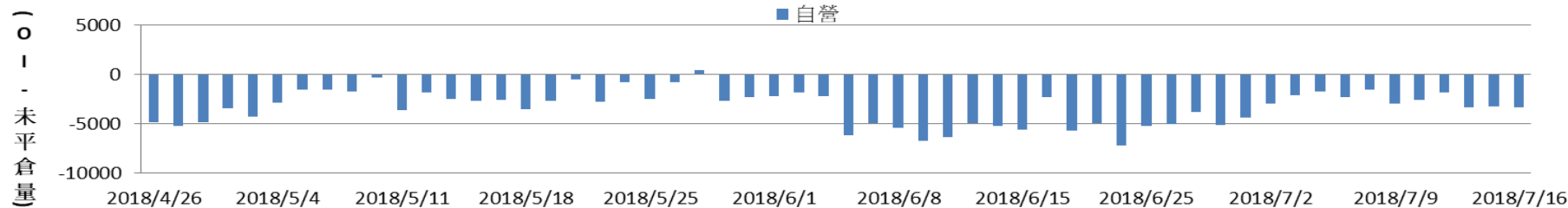
期貨外資未平倉口數V.S 加權指數



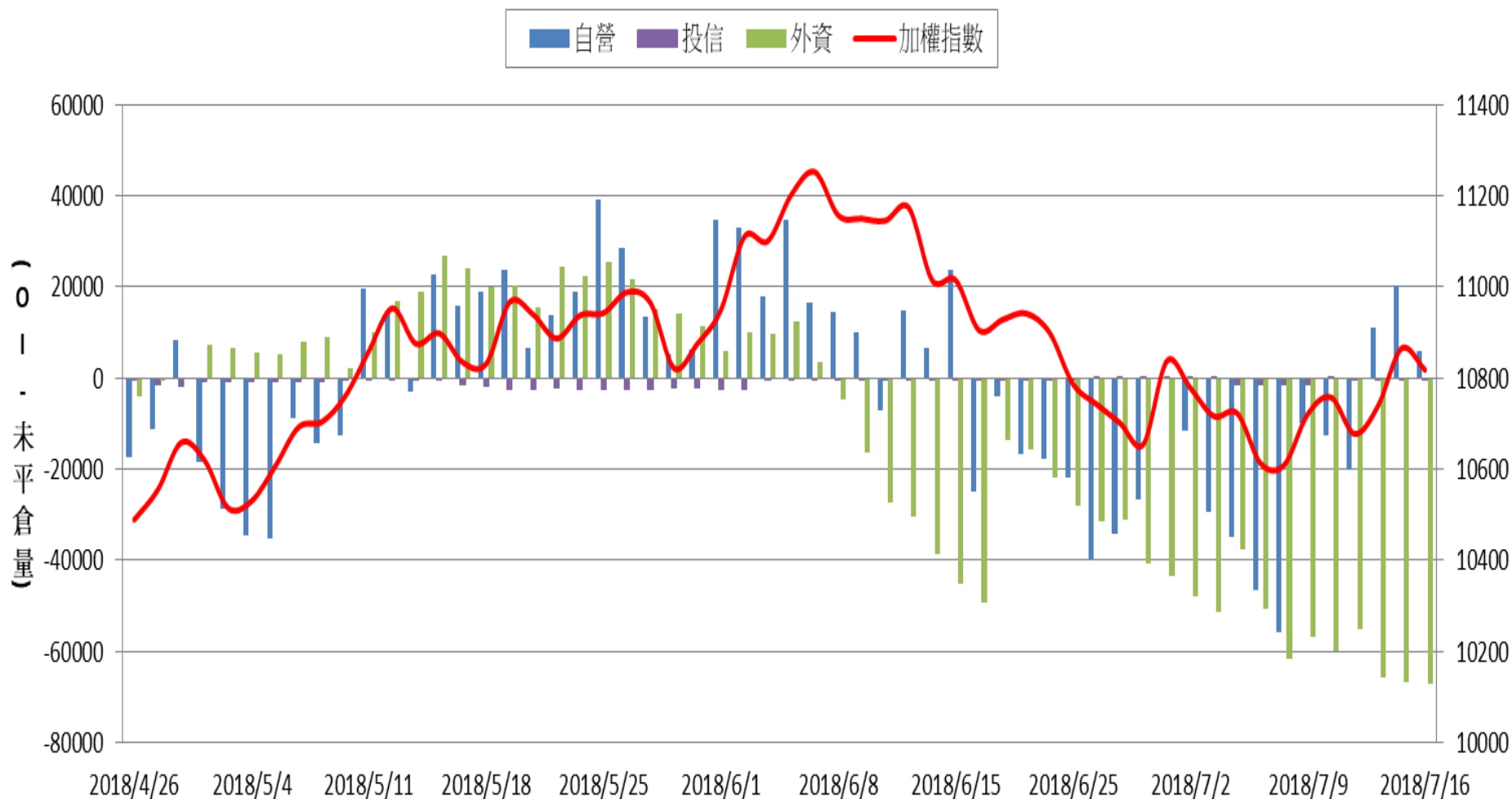
期貨投信未平倉口數



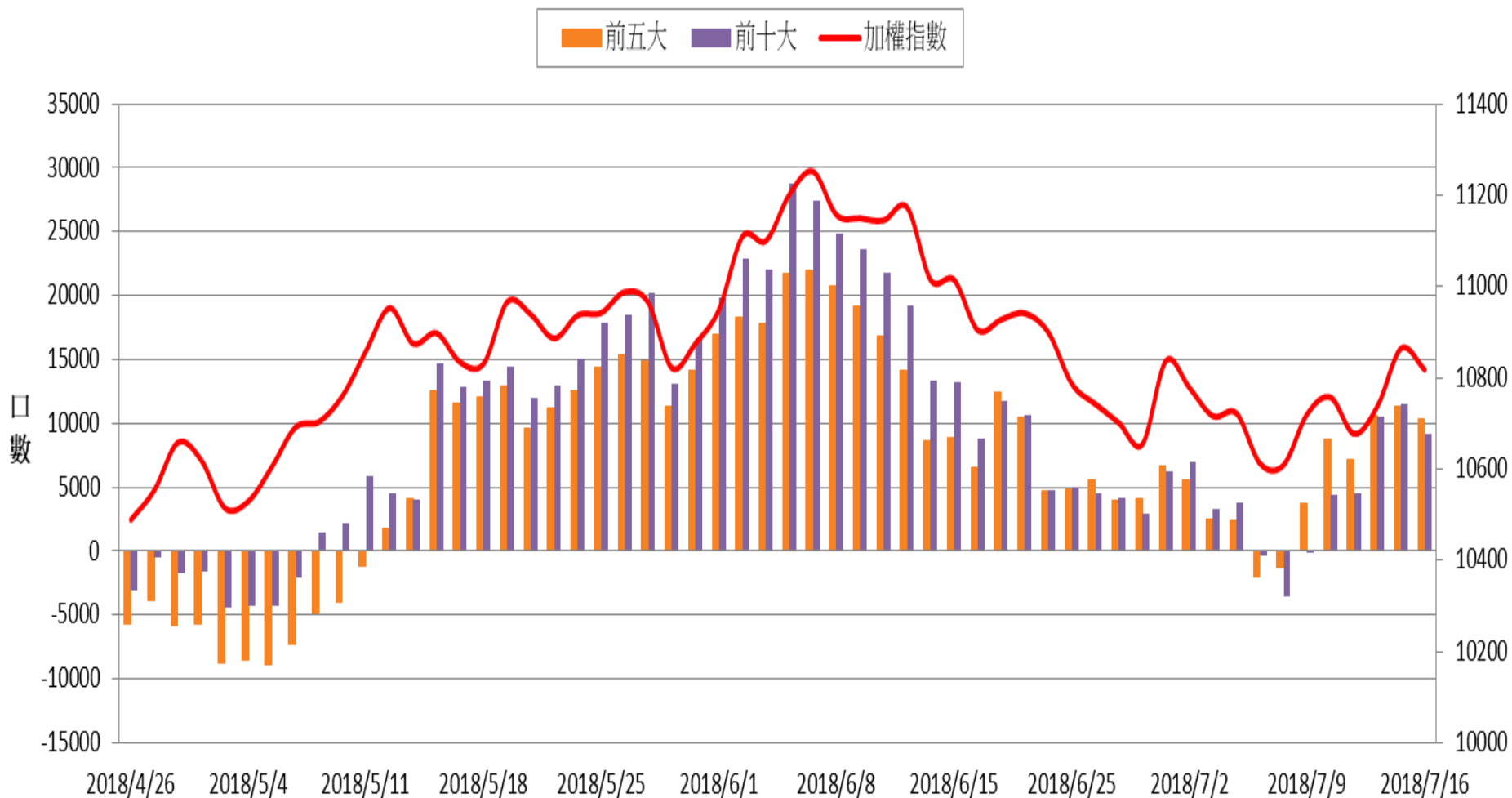
期貨自營未平倉口數



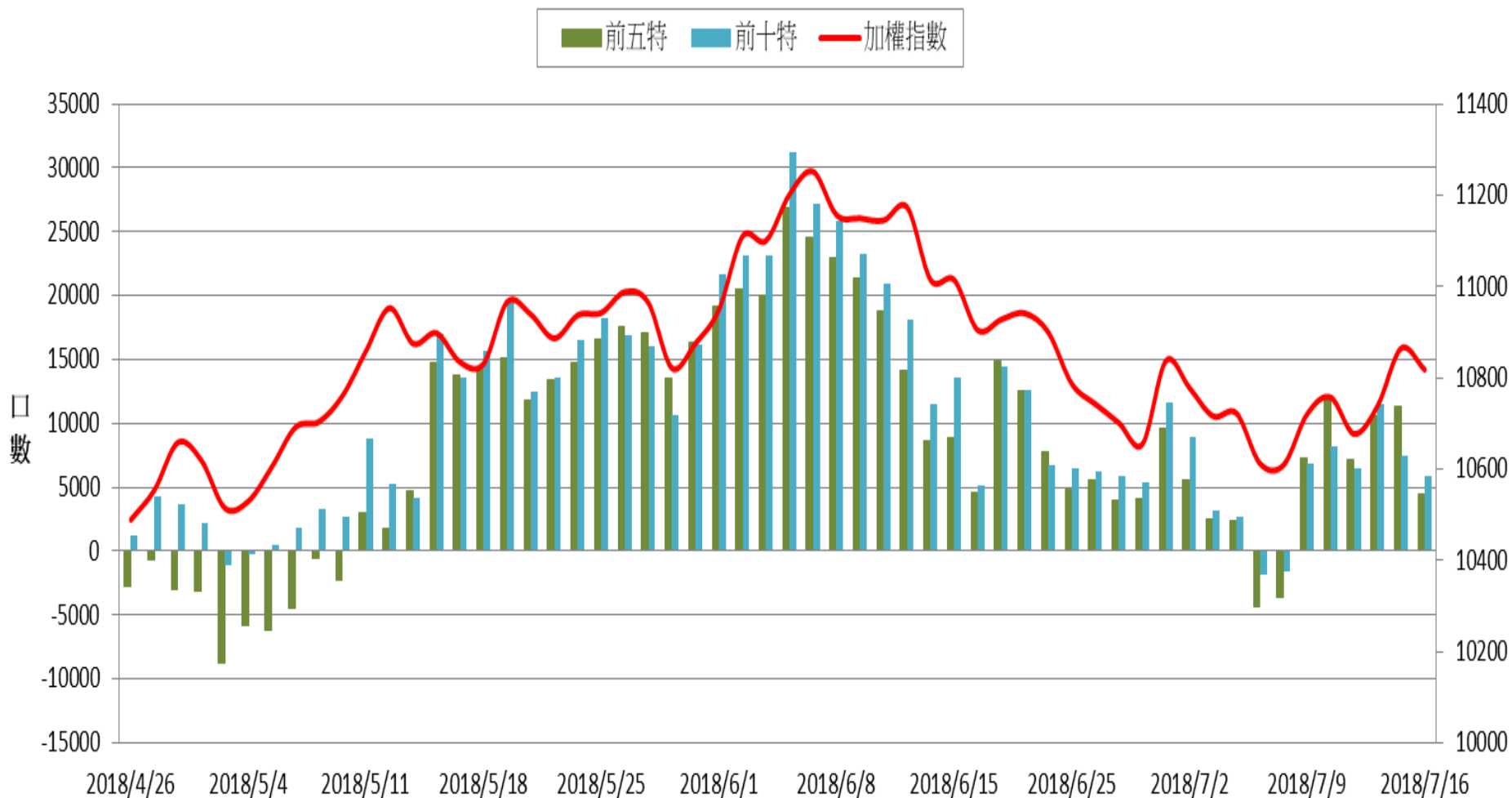
選擇權三大法人未平倉口數V.S 加權指數



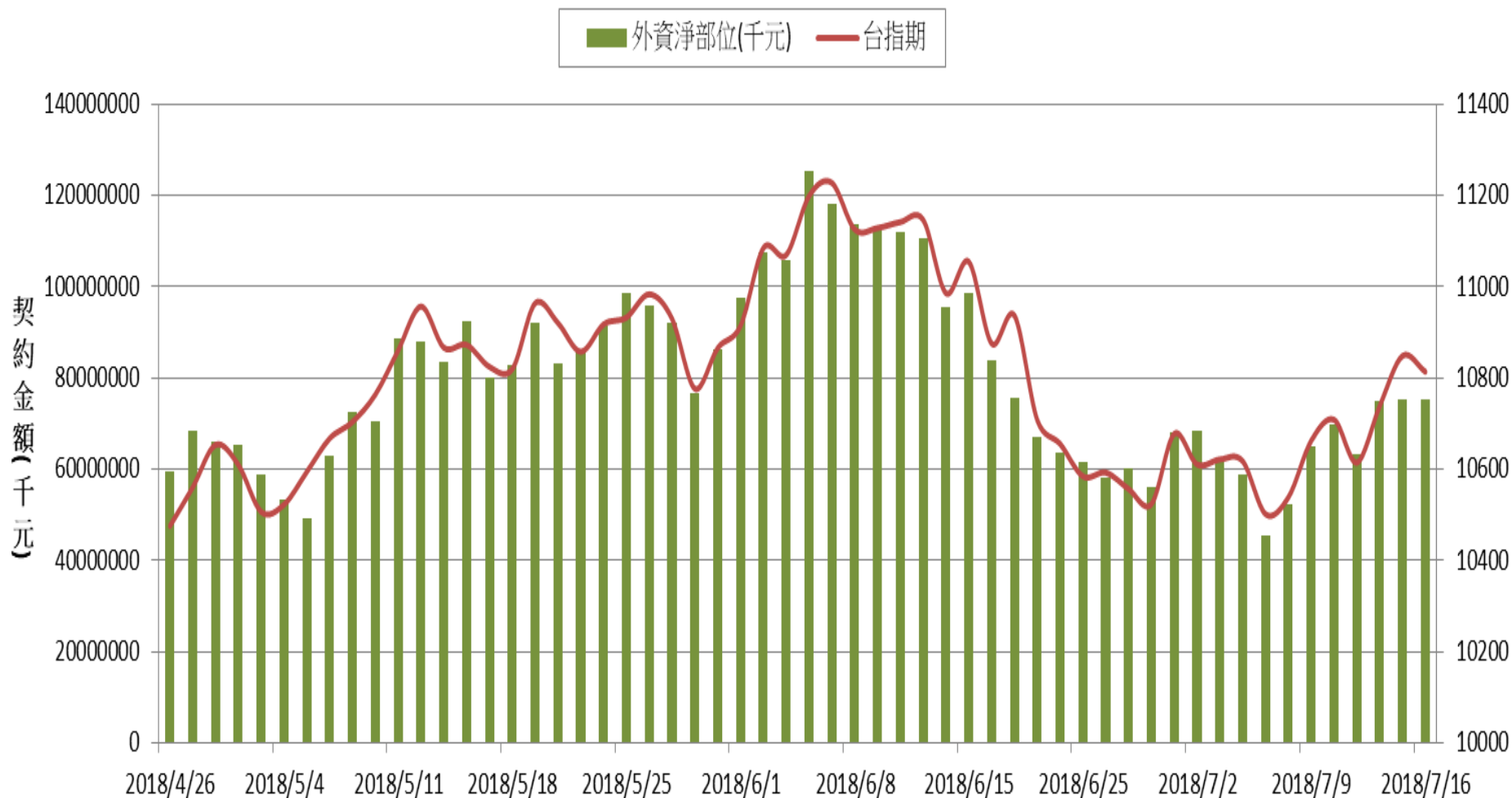
加權指數V.S期貨大額法人未平倉口數



加權指數V.S期貨特定法人未平倉口數

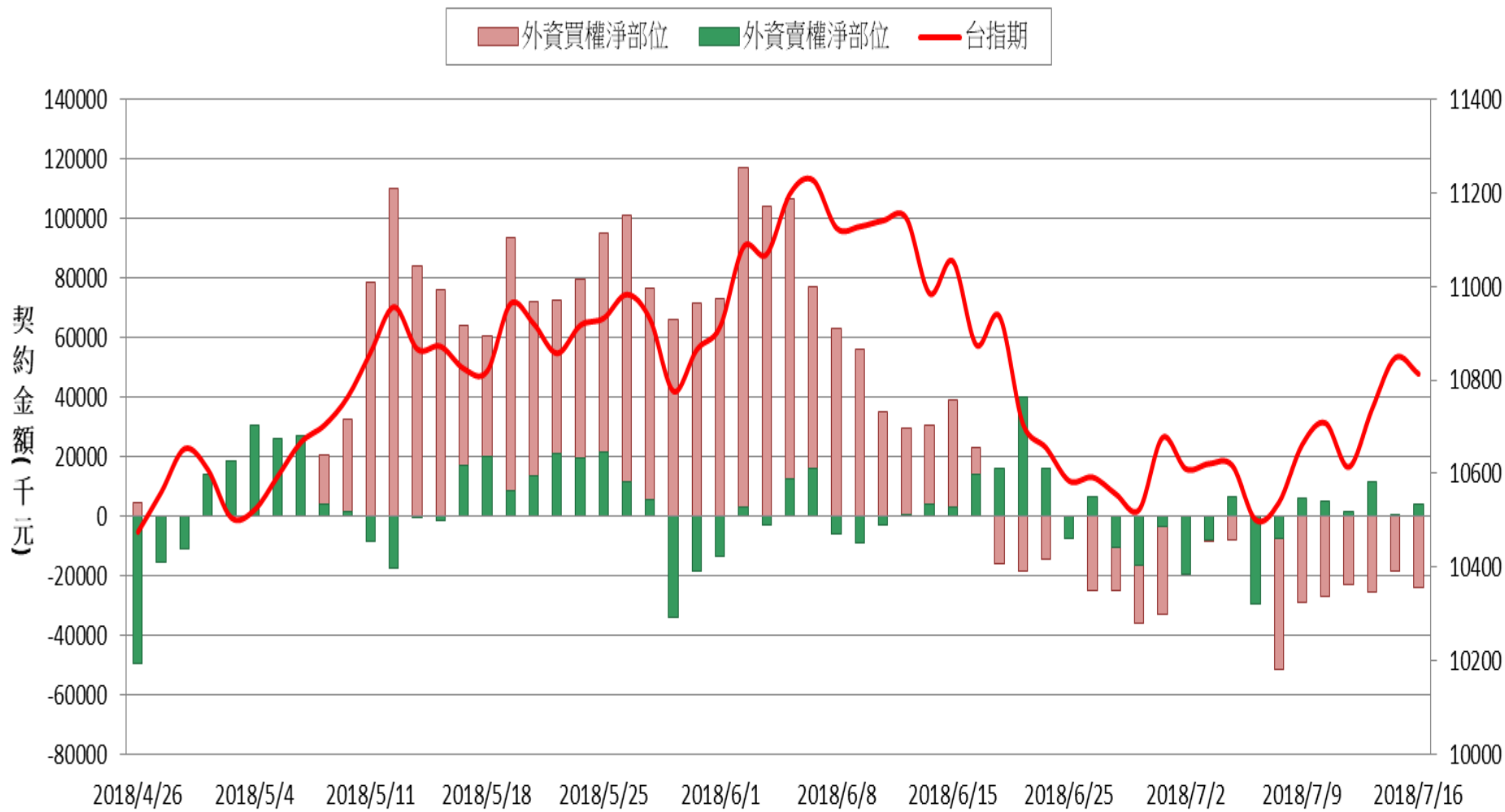


外資台指期與選擇權淨部位契約金額V.S台指期

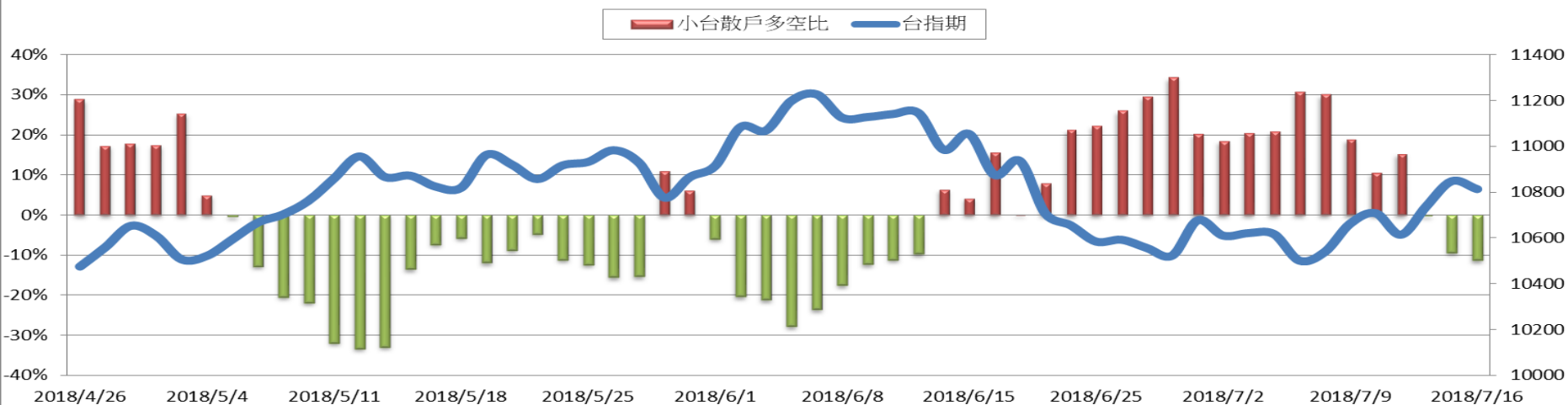


期權交易財務槓桿高，交易人請慎重考量自身財務能力，並留意控管個人部位及投資風險；過去的績效及預期的表現，不得為未來績效之保證，交易人須自行判斷與負責，本公司不負任何法律責任。華南金融集團 華南期貨股份有限公司 (104)年金管期總字第002號 台北市民生東路四段54號3樓之9 TEL/02-27180000 FAX/02-25463700

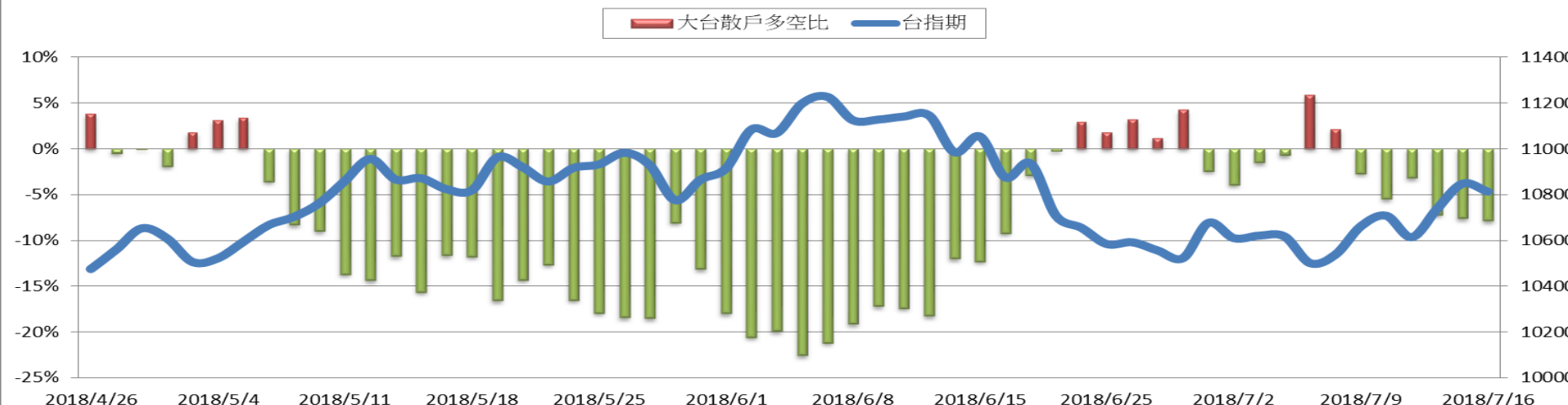
外資買賣權淨部位契約金額V.S台指期



台指期與小台散戶多空比(%)



台指期與大台散戶多空比(%)



買		賣		201807		賣	
Vol	OI變化	OI	履約價	OI	OI變化	Vol	
0	0	5	8900	4800	(-8)	97	
0	0	1	9000	3429	(-10)	40	
0	0	5	9100	1876	(-7)	54	
0	0	1	9200	1783	(-5)	73	
0	0	2	9300	2900	(+38)	85	
0	0	11	9400	5358	(+130)	191	
0	0	27	9500	6168	(+40)	55	
0	0	42	9600	8160	(+40)	116	
0	0	47	9700	8456	(+44)	248	
0	0	397	9800	12363	(-96)	1387	
0	0	9	9900	8774	(+679)	1499	
3	(-3)	58	10000	14098	(-96)	1161	
0	0	92	10100	9498	(+257)	456	
1	(+1)	395	10200	21609	(-101)	917	
2	(-2)	676	10300	22572	(-258)	924	
31	(-23)	1935	10400	16744	(-398)	1882	
6	0	138	10450	6984	(+626)	1909	
512	(-290)	2797	10500	17566	(+69)	4973	
125	(-25)	1179	10550	9705	(-21)	7238	
1002	(-258)	9714	10600	24395	(-493)	17686	
1318	(-425)	3001	10650	13833	(+1175)	12921	
7416	(-1231)	13191	10700	24613	(+2391)	28622	
12064	(-556)	6062	10750	16349	(+1406)	37134	
55020	(+10542)	30912	10800	16224	(+2961)	50929	
51082	(+3607)	17363	10850	7082	(+1744)	33448	
47188	(+2321)	29686	10900	4917	(+691)	20576	
24755	(+5114)	17971	10950	1984	(+697)	9925	
16776	(+1629)	32496	11000	2071	(+74)	2562	
5295	(+1746)	5878	11050	78	(+48)	140	
3800	(-252)	18252	11100	1327	(+4)	18	
443	(+238)	238	11150	0		0	
256	(-39)	14012	11200	116	0	0	
1192	(+1079)	10389	11300	191	0	0	
652	(+414)	7360	11400	69	0	1	
122	(+100)	5265	11500	43	0	4	
203	0	3946	11600	55	0	0	
1	(+1)	2010	11700	17	0	0	
100	(+100)	2942	11800	1	0	1	
21	(+1)	1765	11900	21	0	0	
20	0	2494	12000	1	0	0	
24	(-4)	918	12100	40	0	0	
22	0	426	12200	0	0	0	
20	(+20)	547	12300	0	0	0	
20	(+20)	759	12400	5	0	0	
60	(+20)	566	12500	0	0	0	
20	(+20)	719	12600	0	0	0	
20	(+20)	700	12700	0	0	0	
20	(+20)	834	12800	0	0	0	
20	(+20)	723	12900	20	0	0	
20	0	977	13000	0	0	0	